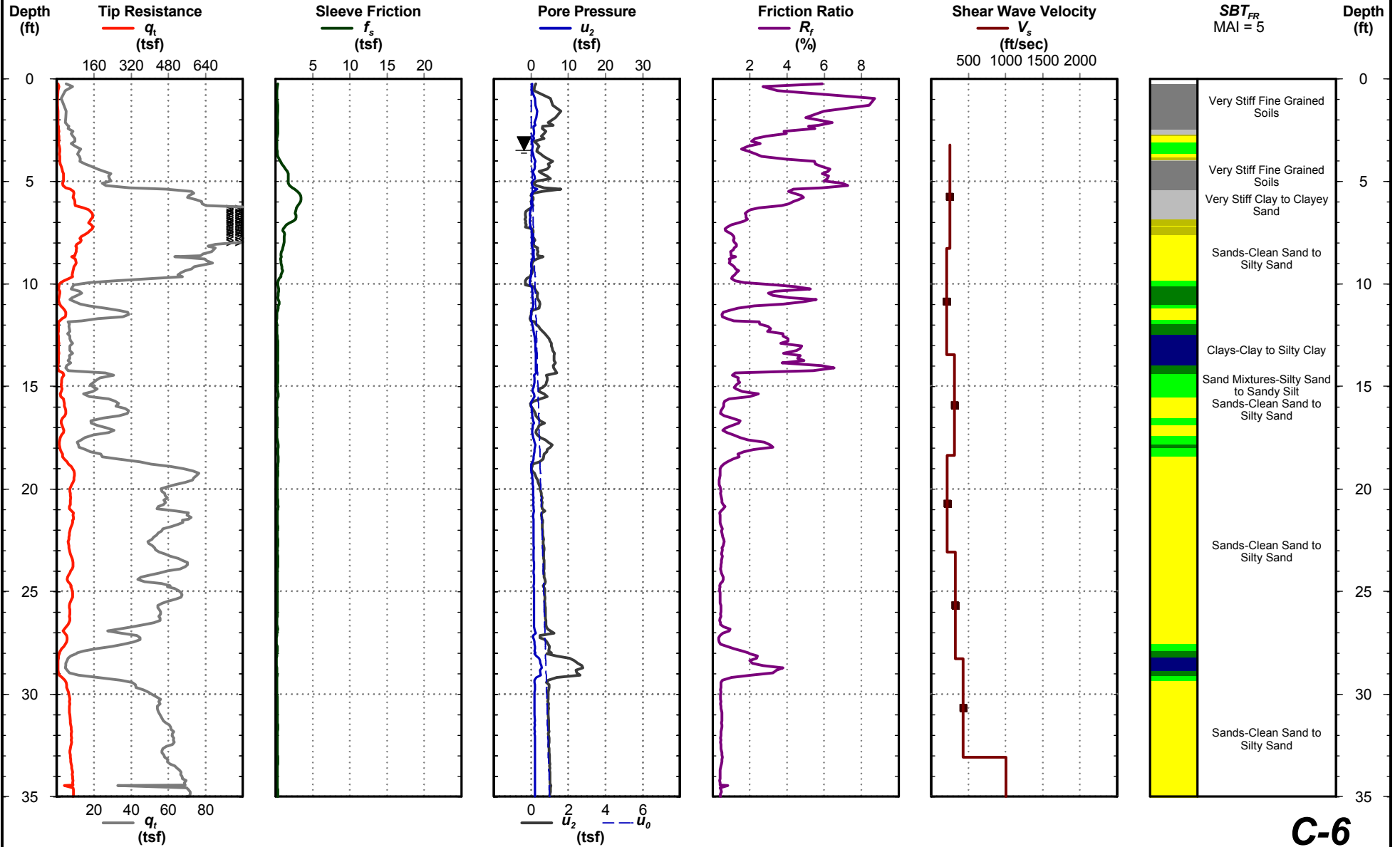




Date: May. 1, 2000
Estimated Water Depth: 3.5 ft
Rig/Operator:

Latitude:
Longitude:
Elevation:

Total Depth: 39.7 ft
Termination Criteria:
Cone Size: 1.44





Dataforensics

I-26 Interchange Improvements
Charleston, SC
Project No: 1131-98-725

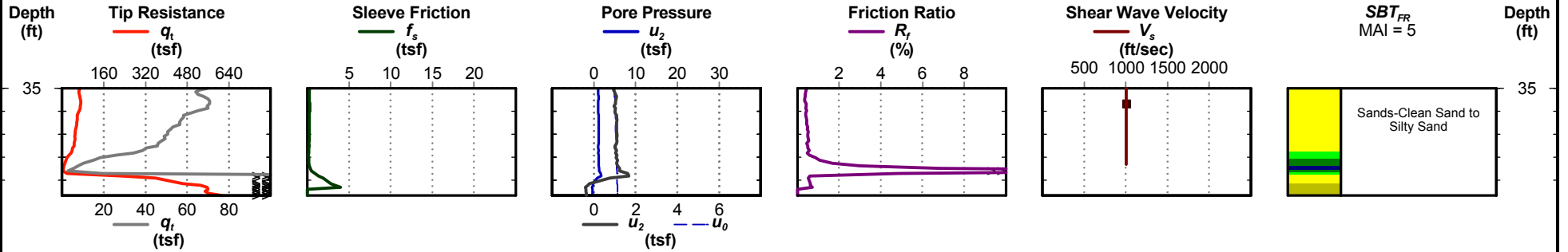
Cone Penetration Test

C-6

Date: May. 1, 2000
Estimated Water Depth: 3.5 ft
Rig/Operator:

Latitude:
Longitude:
Elevation:

Total Depth: 39.7 ft
Termination Criteria:
Cone Size: 1.44



C-6